

flotex® Van Gogh



942

flotex® tibor
ziggurat



980209 | 980207

Our designers have created 6 floor designs inspired by famous Van Gogh paintings. A tribute to Van Gogh, made possible by the unique characteristics of Flotex flocked flooring.

Thanks to the high density of the fibres, Flotex is ideal to print digitally and this allows for picturesque floors. Flotex is strong and durable, so despite intensive use the prints will remain beautiful over time.



942 | Lullaby La Berceuse



941 | Sunflowers



940 | Patch of Grass



943 | Postman



939 | Almond blossom



944 | Terrace at night



980211 | saffron



980207 | marigold



980203 | rust



980209 | autumn



980208 | marine



980206 | aqua



980202 | teal



980204 | raspberry



980210 | taupe



980205 | gunmetal



980201 | lead



980212 | grey

Through focusing on texture and line, Tibor's detailed photograph of straw inspired this famous pattern from the Fotexur range. The photograph was taken in the spring sunshine to give the image greater definition and the design deliberately highlights the tonal contrast between light and dark. Co-ordinating broad stripes available in two colourways.

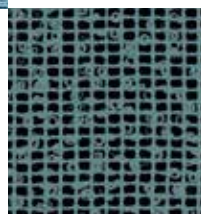
FLOTEX

flotex® tibor mosaic

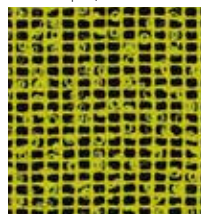


980406

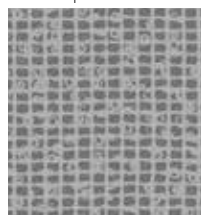
Tibor often incorporated richly-textured ‘fancy yarns’ into his weaves to create tactile effects. For this pattern Tibor photographed a sheer fabric made from slub yarn. The uniformity of the grid contrasts pleasingly with the randomness of the loops. Co-ordinating stripes available in two colourways.



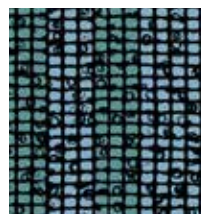
980406 | aqua



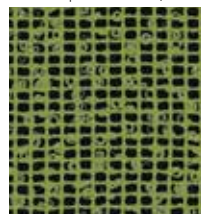
980409 | citron



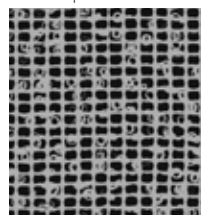
980408 | stone



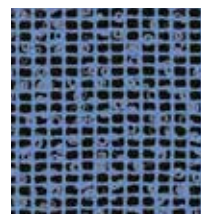
980411 | marine stripe



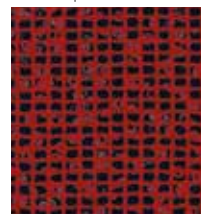
980404 | lime



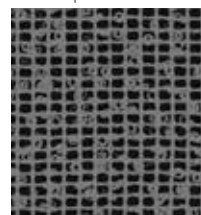
980405 | monochrome



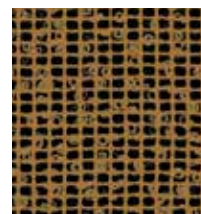
980402 | cornflower



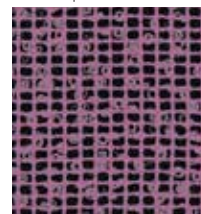
980407 | tomato



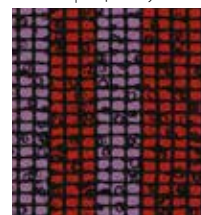
980401 | pewter



980410 | saffron



980403 | raspberry



980412 | raspberry stripe

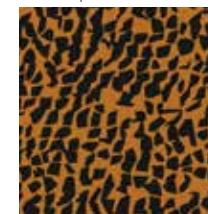
flotex® tibor quartz



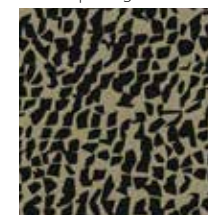
980101



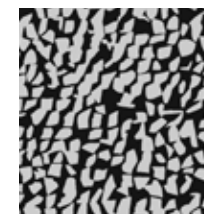
980104 | white



980105 | orange



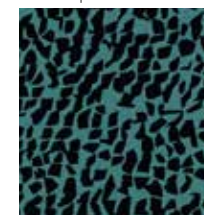
980102 | camel



980101 | black

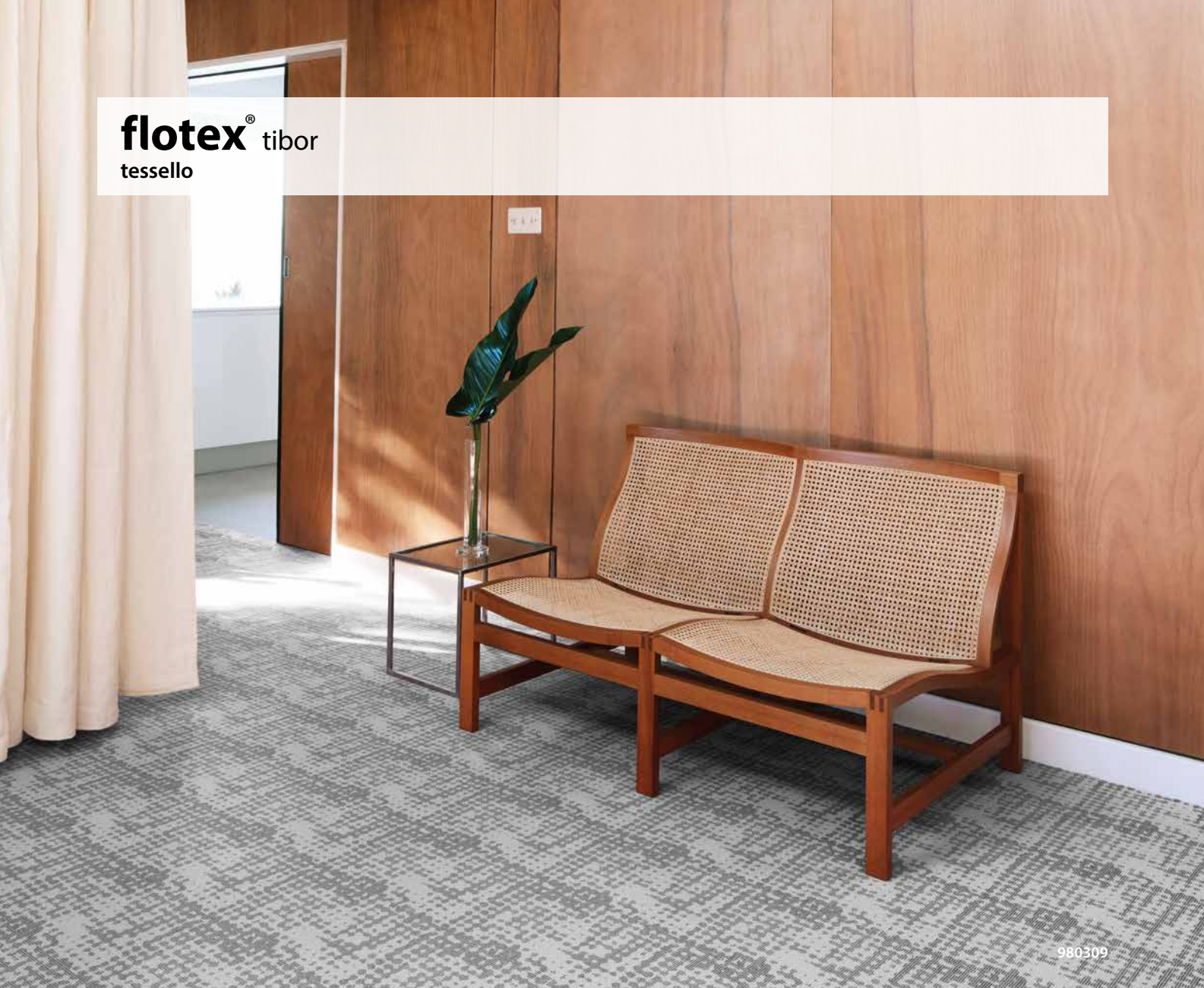


980105 | saffron



980106 | cornflower

The natural world provided a great source of inspiration for Tibor and he photographed it extensively. This pattern depicts the granular composition of rocks and pebbles.



980309



980702

This ingenious Tibor pattern has two distinct layers: a fine mesh in the background, overlaid with a fragmented larger scale-grid. Structured yet informal, its subtle textures create a highly effective low-key flooring design.



980309 | stone



980305 | Ice



980301 | pewter



980310 | taupe



980307 | saffron



980303 | lime



980302 | aqua



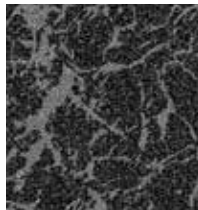
980306 | marine



980308 | fuschia



980304 | tomato



980702 | pewter



980703 | grey



980705 | heather



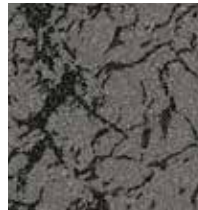
980706 | honey



980704 | marine



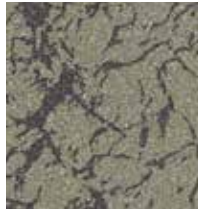
980707 | mauve



980708 | smoke



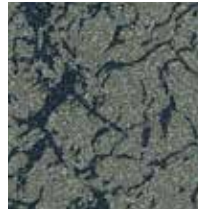
980709 | stone



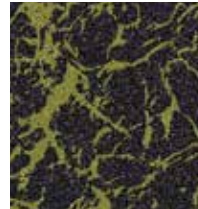
980711 | taupe



980712 | clay



980710 | moss



980701 | lime

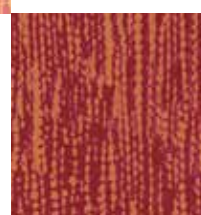
Although this pattern resembles marble, it was actually inspired by a photograph of cracked mud in the riverbed next to Tibor's Clifford Mill. One of his most famous Fotexur designs, it was originally used for a woven carpet called Padua, so it is particularly apt that it is now being used for decorative flooring once again. The majority of colourways work in pairs as positive and negative variations.

flotex[®] tibor
tweedy



980504

Tibor was unusual as a textile designer in creating both printed and woven fabrics. This pattern was inspired by a photograph of one of his celebrated Deep Texture weaves, in which irregular slubby yarns were used to create tactile fabrics with textural variety and depth.



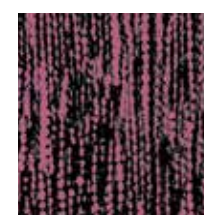
980504 | flame



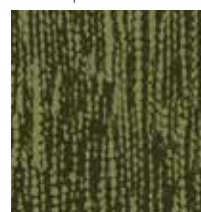
980509 | orange



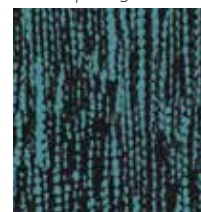
980514 | citron



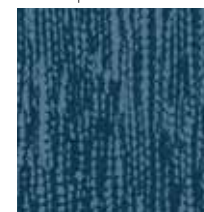
980512 | raspberry



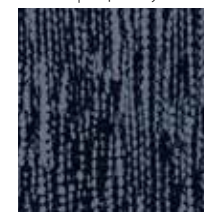
980508 | lime



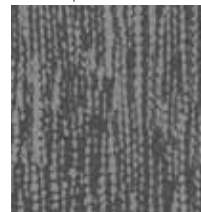
980513 | petrol



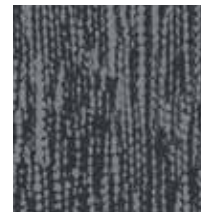
980503 | aqua



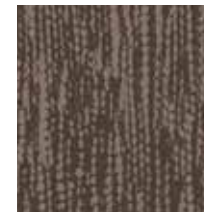
980502 | marine



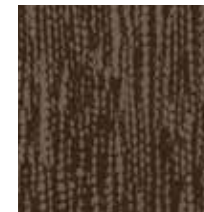
980506 | stone



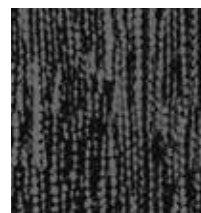
980507 | grey



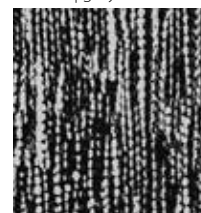
980510 | clay



980505 | coffee

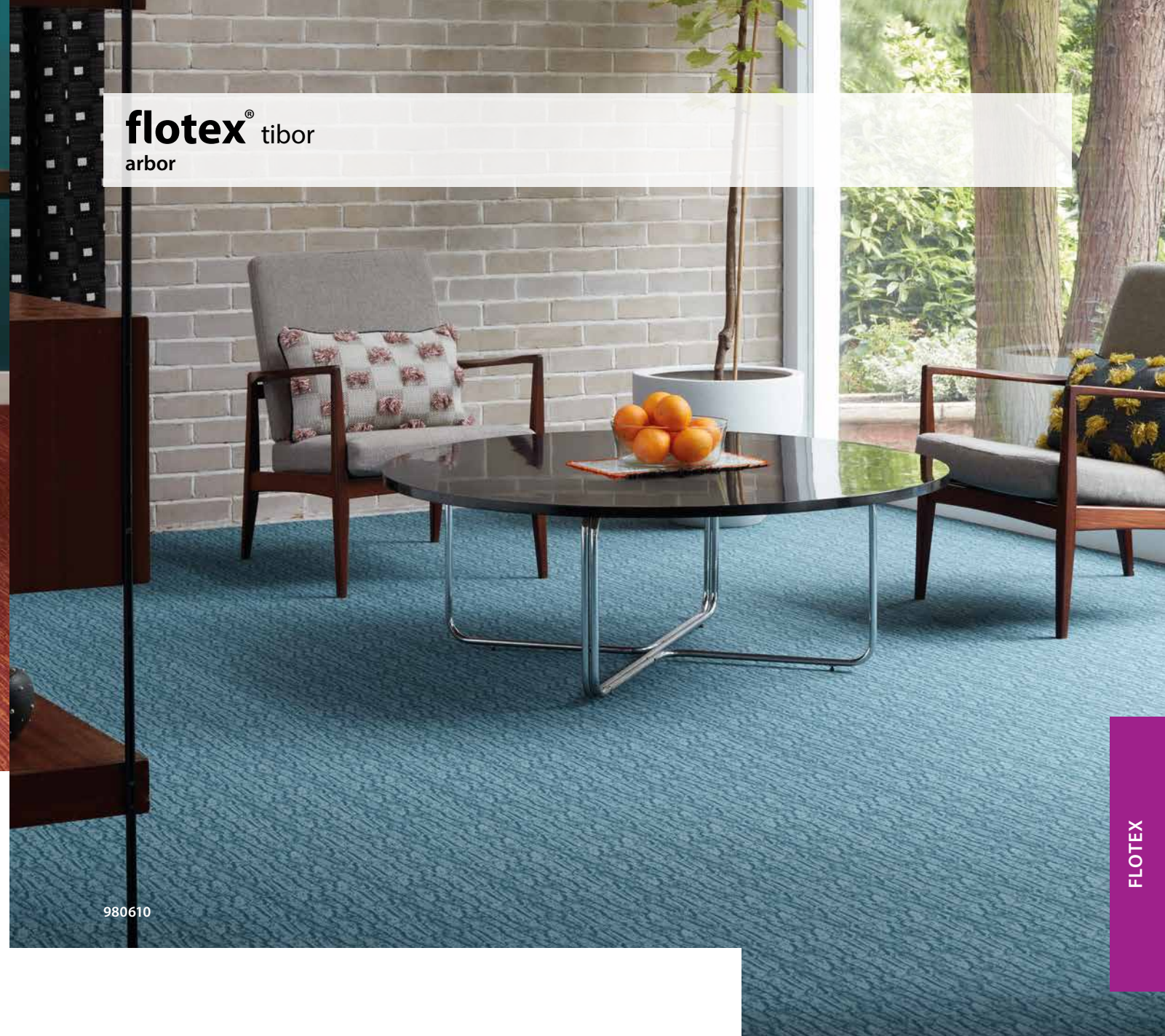


980501 | pewter



980511 | monochrome

flotex[®] tibor
arbor



980610



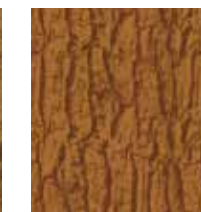
980604 | purple



980603 | moss



980612 | saffron



980608 | marigold



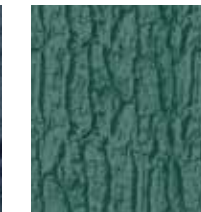
980607 | clay



980611 | taupe



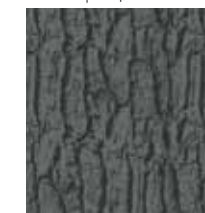
980602 | marine



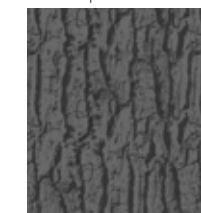
980606 | aqua



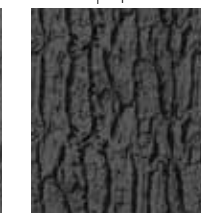
980610 | cornflower



980609 | stone



980605 | grey

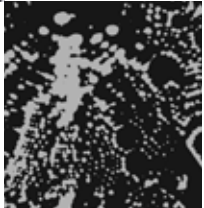


980601 | pewter

Like all Tibor's Fotexur patterns, the starting point for this design was a crisp black and white photograph taken by the designer himself. The image, recording the rough striated bark of an oak tree, is ruggedly textural, providing the perfect foil for varied coloured overlays.



This design, derived from a photograph of an atomic structure, symbolises the period known as the Atomic Age. Part of the Colatomic range, launched in 1960, it reflects Tibor's dual interests in colour and texture. It also reflects the impact of Abstract Expressionism, which was very popular in the art world at the time.



980803 | monochrome



980804 | aqua



980802 | saffron



980801 | raspberry

Technical specifications: **flotex** tibor

Flotex Tibor sheet meet the requirements of EN 1307

	Total thickness	ISO 1765	4.3 mm
	Commercial use	EN 685	Class 33 heavy
	Roll width	2.0 m	
	Roll length	30 m	
	Total weight	ISO 8543	1.8 kg/m²
	Dimensional stability	ISO 2551 / EN 986	< 0.2%
	Abrasion resistance	EN 1307 annex F	> 1000 cycles
	Castor chair continuous use	EN 985	r = ≥2.4 continuous use
	Light fastness	EN ISO 105-B02	≥ 6
	Slip resistance	UK SRG pendulum	Dry – very low slip risk Wet – low slip risk
	Acoustical	EN-ISO 717-2	Impact sound ΔLw = 20 dB
	Water tightness	ISO 354	Sound absorption = 0.10
	Water tightness	EN 1307 annex G	Pass
	Creating better environments		
	Renewable electricity	Flotex is manufactured using 100% electricity made from renewable sources	
	Recycled content	Flotex sheet contains approximately 22% recycled content by weight	
	Back to the Floor	Installation off cuts can be collected and recycled via Back to the Floor	
	Ska	Flotex meets the Ska Rating criteria for M12 soft floor coverings in both office and retail schemes	
	LCA	LCA is a foundation for securing the lowest environmental impact	

Flotex meets the requirements of EN 14041

	Reaction to fire	EN 13501	B _{f1} s1
	Slip resistance	EN 13893	DS: ≥ 0.30
	Body voltage	ISO 6356	< 2 kV
	Thermal conductivity	ISO 8302	0.048 m² K/W